



MONTHLY MEMBERSHIP PROGRESS REPORT

District 3 E

Results as of: 06/30/2019

GMT: OPEN

LOCATION OKLAHOMA

GMT CA

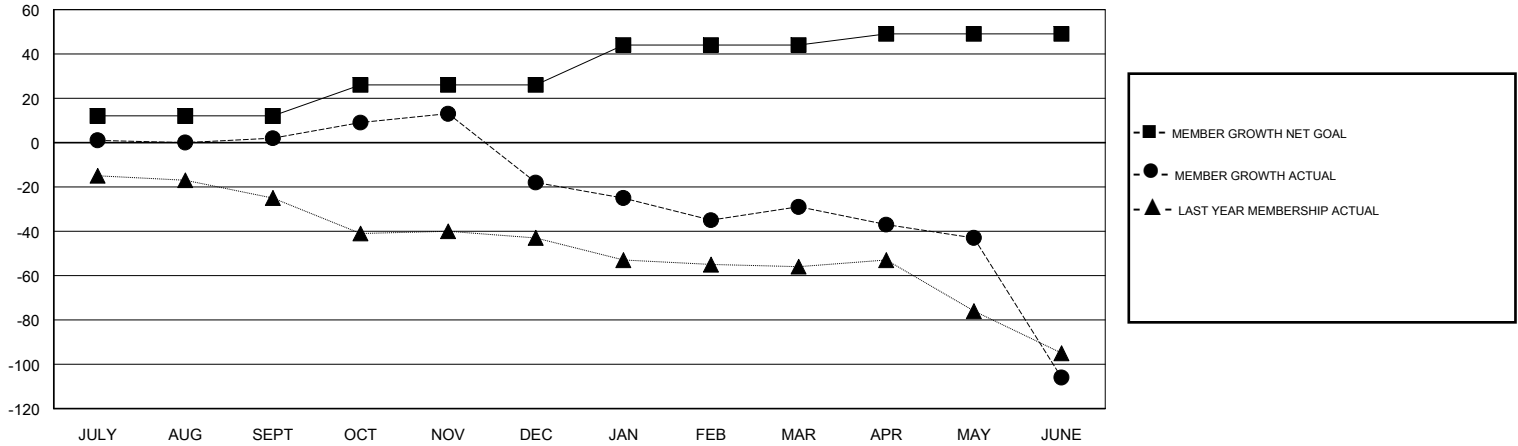
Clubs			
RESULTS FOR 2018-2019			
QUARTER	NEW CLUB GOAL	NEW CLUBS	DROPPED CLUBS
JULY/AUG/SEPT	0	0	0
OCT/NOV/DEC	0	0	1
JAN/FEB/MAR	1	0	1
APR/MAY/JUNE	0	0	2

Members			
RESULTS FOR 2018-2019			
QUARTER	MEMBER GROWTH NET GOAL	MEMBER GROWTH ACTUAL	DROPPED MEMBERS ACTUAL (including transfers)
JULY/AUG/SEPT	12	34	26
OCT/NOV/DEC	14	25	40
JAN/FEB/MAR	18	37	42
APR/MAY/JUNE	5	26	98

GOALS AND ACTUAL NEW CLUBS CUMULATIVE



GOALS AND ACTUAL MEMBERS CUMULATIVE



DROPPED CLUBS: 4	31 CLUBS OF 53 ADDED 1 OR MORE NEW MEMBERS	<u>GENDER DISTRIBUTION</u> MALE 723 (65.14%) FEMALE 387 (34.86%) Women Percentage Fiscal Year Goal: 5%
<u>DROPPED MEMBERS</u> DECEASED 9 CLUB CANCELLED 39 OTHER 158 TOTAL 206	CLICK HERE FOR CUMULATIVE MEMBERSHIP DATA	TOTAL FAMILY UNIT MEMBERS 162 FAMILY MEMBERS PAYING HALF DUES 82